

MUTOH

MAKES IT POSSIBLE 

XpertJet 1682SR 1641SR



The "XpertJet 1682SR 64" Eco-Solvent Printer from Mutoh has a staggered dualhead design that provides ultra-fast print speeds. It's capable of producing smooth gradations while delivering high-quality printing even with reduced resolution thanks to the 7-color ink configuration (CMYK Lc Lm Lk).

The "XpertJet 1641SR 64" Eco-Solvent single head, 4 color (CMYK) printer, builds upon Mutoh's made in Japan reputation and delivers superior print quality outstanding speeds at an affordable price.

The newly designed platform is packed with features like automatic bi-directional alignments, a user-friendly touch panel, added LED lighting, and an upgraded media feed flange that allows operators to easily and quickly load media and exchange multiple rolls.

These features are designed to increase user-friendly operation and maintenance while continuing to offer high production, high-quality output. The "XPJ" 1682SR and 1641SR are paired with Mutoh's "MS41" Eco-Solvent ink, which offers users a larger color gamut, outstanding durability, and improved dot gain.

- > High Precision Aluminum Rail Mechanism for high quality and stable printing.
- > Improved "Media Feed Mechanism" corresponding to a wide range of media.
- > New Eco-Solvent Ink provides high image quality and high productivity.
- > The built-in color sensor achieves "Automatic Bi-Directional Alignments".
- > The Newly Developed Media Flange allows for easy media loading.
- > MSM (MUTOH Status Monitor) improved convenience and response.
- > Upgraded Operation Panel with LED guide function.
- > Front Access of Ink Cartridge Holders, LAN cable and power codes.
- > Internal LED Lighting enable operator to easily check print status.

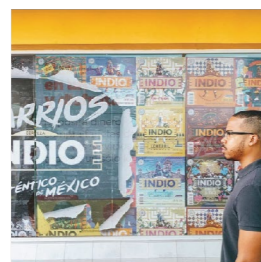


Specifications

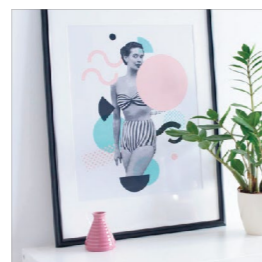
Print method	On-demand piezo drive system
Head Height	Three-level adjustment of Low 1.5mm, Mid. 2.5mm, and High 4.0mm
Number of heads	2 staggered (XPJ-1642SR) 1 (XPJ-1642SR)
Max. media width	1625mm / Minimum 500mm
Max. media thickness	Low: 0.3 mm Mid: 1.3 mm High: 2.8 mm
Max. media diameter	150 mm or less
Core diameter	50mm or 75mm
Media weight	30 Kg
Max. print width	1615mm
Max. print length	1500 m
Ink Type	Eco-Solvent ink
Ink Colour	4-color K·C·M·Y / 7-color K·C·M·Y·Lc·Lm·Lk (XPJ-1682SR)
Ink Volume	1000ml ink bag
Max. print resolution	1440dpi
Interface	Gb-Ethernet (1000BASE-T)
Power supply:	Printer Voltage: AC 100V~120V ±10% / AC 200V~240V ±10% Frequency: 50/60Hz ±1Hz
	Heater Voltage: AC 100V~120V ±10% / AC 200V~240V ±10% Frequency: 50/60Hz ±1Hz
Operation Temperature	20°C~32°C Humidity: 40%~60% No condensation
Accuracy Guaranteed Temperature	22°C~30°C Humidity: 40%~60% No condensation
Power consumption operation	AC100V-120V±10% / AC200V-240V±10%, 1100W or below
Power consumption sleep mode	AC100V-120V±10% / AC200V-240V±10%, 30W or below
External dimensions	(W) x (D) x (H) body: 2750mm x 895mm x 1428mm (cover closed), 1524mm (cover opened) / (when installing ink bag cases: 1613mm)
Weight Main body:	142kg (XPJ-1641SR) 146 kg (XPJ-1682SR) Stand 33 kg
RIP software	FlexiSIGN & PRINT MUTOH Edition



WRAPS



SIGNAGE



POSTERS



BANNER

ValueJet® 628

Smart Printing Equals Value



Eco-Ultra Printer

The applications are limitless with Mutoh's ValueJet 628 printer. At just 24 inches (610mm) wide, the VJ 628 fits into any size print shop. You can easily and efficiently create a variety of applications including stickers, decals, banners, indoor and outdoor signage. You can even print directly onto Eco-solvent transfer paper to create custom t-shirts and apparel. The printer fits easily onto a table or optional stand for your use. With a low price point and perfect size, the VJ 628 is the best option for anyone entering the wide-format marketplace or wanting to expand their applications.

ValueJet 628



*Shown with option

Compact size, fits on a table. Or add the stand and take-up unit for productivity.

Perfect for small sign shop, point of sale, print on demand, department stores

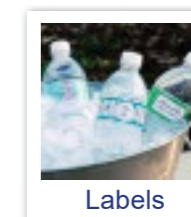
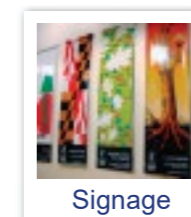
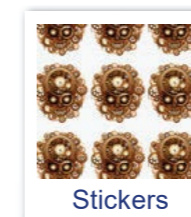
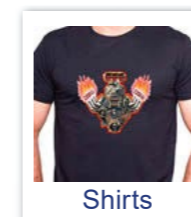
Up to 6 colour capability, print using CMYK, Lc, Lm

Latest generation piezo print head technology

Impeccable print quality every time with Mutoh i² print technology

Print method	Drop-On Demand Piezo
No. of nozzles / No. of heads	(180 x 8 rows) / 1 head
Ink type	Eco-Ultra 220ml cartridges
Variable dot	Yes
Minimum droplet size	3.5 pl
Print modes	1440/1080/720/540/360dpi 30 modes
Colour options	CMYKx2 / CMYK Lc,Lm
Production speed	9 sqm/hr at 720 x 720 dpi
Maximum resolution	1440 dpi
Head height	Low 1.2 mm / High 2.5 mm
Maximum media width	630 mm
Maximum print width	620 mm
Heating / drying system	Pre/ Post Heaters as Standard

Media roll diameter / core	6" maximum / Core 3" or 2"
Take-up system	Available as an Option
Stand	Available as an Option
RIP Software	FlexiSign & Print Mutoh Edition
Media Auto Cut	Yes
Power requirements	200 - 240 V AC @50Hz Single Phase
Operating temperature	20°C - 32°C
Operating humidity range	40% - 60%
Dimensions - printer	1194(w)x 432(d)x 356(h)mm
Weight - printer	33Kg / Stand 8.7 kg
Dimensions - shipping	1310(w)x 560(d)x 480(h)mm
Weight - shipping	36Kg
Warranty	1 Year



- ✓ Small 24 inch printer fits perfectly into any print shop
- ✓ Create custom clothing, decals, stickers, indoor and outdoor signage and much more
- ✓ Mutoh's VSM app lets you check printer settings from your smart phone
- ✓ Mutoh's patented Intelligent Interweave i² print technology virtually eliminates banding
- ✓ Use on a table-top or with optional stand.

ValueJet® 1324X



Signmaking has never been this easy

- > 54" (1371mm) four-colour Eco-Solvent printer for short and medium run Sign & Display production
- > New X-Series model features Mutoh's DropMaster technology
- > Suits the most popular size self-adhesive vinyl, decals and short-run banners
- > Variable dot Piezo print head offering smooth gradations and excellent speed
- > Uses Mutoh genuine Eco-Ultra ink in 220ml cartridges and 1 litre packs
- > 19 Kg take-up available as an option
- > Impeccable print quality every time with Mutoh Intelligent Interweaving print technology (i²)
- > Optional SpectroVue VM-10 spectrophotometer attaches to the print carriage for colour calibrations and profiling
- > Choose from several major brand RIPs to suit your needs

ValueJet 1324X

The 54" (1371mm) ValueJet-1324X is one of our latest X-Series printers, employing DropMaster technology.

This compact printer supports 54" media, the most popular size, and will suit low-volume users and startups alike. Print vinyl, decals, canvas, poster paper, wall coverings, short-run banner and more.

DropMaster technology calculates the dot throw and eliminates the need for adjustments each time the media is changed.

Using the same variable dot Piezo printhead as other Mutoh eco-solvent printers, the VJ-1324X also incorporates Mutoh Intelligent Interweaving print technology (i²) that virtually eliminates banding, giving optimum quality at very respectable production speeds.

Specifications

Technical Key Specifications

Print Technology	Drop-on-demand Micro Piezo Inkjet Technology
Print Head	1
Nozzle Configuration	180 nozzles x 8 lines
Drop Mass Range	(pl) 3.5 to 35.2
Head Heights (mm)	Low : 1.2 / High : 2.0

Media Specifications

Max. Media Width	1371 mm (54")
Max. Print Width	1361 mm (53,58")
Max. Media Thickness	0.3 / 1.3 mm *

* Max media thickness dependent on head height

Media Measurements * Ø 150 mm / 2" & 3" cores / 19 kg

* Standard non-motorised roll-off system

Media Drying System	Individually controlled pre-heater, fixer & dryer (30 - 50 °C)
---------------------	--

Ink Specifications

Ink Type	Eco Ultra
Ink Volume	220 ml cartridge & 1000 ml bag *
Ink Colours	CMYK
UV durability	Up to 3 years outdoor (without lamination) *

* For heavy duty applications where mechanical stress is involved, lamination is required. Stabilisation is required prior to lamination. Outdoor durability dependent on ink coverage, display conditions, media type, lighting angle and other factors. Testing under your conditions is recommended.

Performance

High Quality	(720 x 1440) 3.9 m ² /h
Quality	(720 x 1080) 6.0 m ² /h
Quality Production	(720 x 1080) 7.9 m ² /h
Production	(720 x 720) 11.8 m ² /h
Speed Production	(720 x 720) 16.4 m ² /h
Billboard	(360 x 720) 27.9 m ² /h

Power Consumption

During Printing	< 500 W
In Stand-by	45 W
Warming Up	≤ 1550 W
Power Supply	AC 200-240 - 50 Hz

Recommended Working Environment

Temperature	22°C - 30°C with Δt: max. 2°C/h
Humidity	40% - 60% (no condensation) with ΔRH: max. 5% RH/h

Machine Dimensions

Width x Depth x Height	1916 x 685 x 1218 mm
Weight	82.3 kg

ValueJet® 2638X



2.6 metres wide, 48 sq metres per hour

- > 2.6 metre (102") wide, double CMYK printer with dual, staggered Piezo print heads
- > New X-Series model features Mutoh's DropMaster technology
- > Print large signs and banners at speeds up to 48 m²/h @ 360 x 720 dpi, 2 passes
- > Print 720 x 720 dpi 'walk-by' banners at speeds between 36 and 40 m²/h
- > Print 720 x 1080 dpi high resolution prints on self-adhesive vinyl at 24 m²/h
- > Heavy duty motorised unwind / wind system handles roll media up to 100kg
- > Impeccable print quality every time with Mutoh Intelligent Interweaving print technology (i²)
- > Optional SpectroVue VM-10 spectrophotometer attaches to the print carriage for media calibration and colour profiling
- > Choose from several major brand RIPs to suit your needs
- > Economical: single phase power and uses less than 1000W while printing

ValueJet 2638X

The Mutoh ValueJet 2638X printer is a 2.6 metre (102") eco-solvent printer incorporating dual, staggered Piezo print heads.

Running in a double CMYK configuration and supporting media up to 100Kg, the VJ-2638X delivers production speeds up to 48 square metres per hour in two passes. And unlike some competing products that produce ordinary quality at such large sizes, the VJ-2638X delivers 720x720 dpi output at 40m²/h, perfect for 'walk-by' banners. When even closer inspection of your prints is required, high resolution 720x1080 dpi quality, up to 24m²/h, is made possible thanks to dual, variable dot print heads

The VJ-2638X is ideal for businesses wanting to output a mixture of fast, high quality banners and high resolution poster prints. A ValueJet 2638X will deliver best-in-class speed and superior print quality, without compromise.



Specifications

Technical Key Specifications

Print Technology	Drop-on-demand Micro Piezo Inkjet Technology
Print Head	2 (staggered arrangement)
Nozzle Configuration	180 nozzles x 8 lines per head
Drop Mass Range (pl)	3.6 to 35.2
Head Heights (mm)	Low : 1.5 / Middle: 2.5 / High : 4.0

Media Specifications

Max. Media Width	2600 mm (102")
Max. Print Width	2590 mm
Max. Media Thickness	0.3 / 1.3 / 2.8 mm *

* Max media thickness dependent on head height

Media Measurements * Ø 250 mm / 2" & 3" cores / 100 kg**

* Standard non-motorised roll-off system
 ** Health and Safety procedures should be observed when loading and unloading media rolls

Media Drying System	Individually controlled pre-heater, fixer & dryer (30 - 50 °C)
---------------------	--

Ink Specifications

Ink Type	Eco Ultra
Ink Volume	220 ml & 440ml cartridge & 1000 ml bag *
* 1000 ml bag requires optional adapter	
Ink Colours	CMYK
UV durability	Up to 3 years outdoor (without lamination) *

* For heavy duty applications where mechanical stress is involved, lamination is required. Stabilisation is required prior to lamination. Outdoor durability dependent on ink coverage, display conditions, media type, lighting angle and other factors. Testing under your conditions is recommended.

Performance

High Quality	(1080 x 1440) 12.0 m ² /h
Quality	(720 x 1440) 17.0 m ² /h
Quality Production	(720 x 1080) 24.0 m ² /h
Production	(720 x 720) 36.0 m ² /h
Speed Production	(720 x 720) 40.0 m ² /h
Billboard	(360 x 720) 48.3 m ² /h

Power Consumption

During Printing	< 1000 W
In Stand-by	160 W
Warming Up	≤ 2200 W (main) & ≤ 1850W (heat)
Power Supply	AC 200-240 - 50 Hz

Recommended Working Environment

Temperature	22°C - 30°C with Δt: max. 2°C/h
Humidity	40% - 60% (no condensation) with ΔRH: max. 5% RH/h

Machine Dimensions

Width x Depth x Height	3708 x 885 x 1261 mm
Weight	283 kg

ValueCut II



VC2-600
[max. media width 770mm]

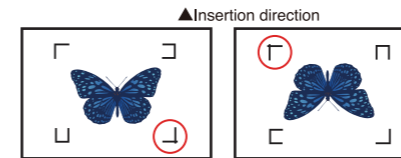


VC2-1300
[max. media width 1594mm]



VC2-1800
[max. media width 1990mm]

Automatic detection of media setting direction



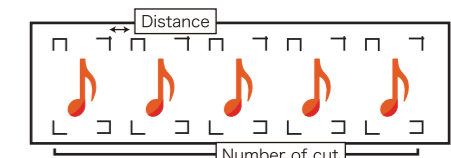
Regardless of whether the media is installed in the back and forth, the orientation of the media is automatically detected from the shape of the registration mark. The cutting data is automatically converted inside the plotter and properly cut.

Segmental alignment for long run cutting job



In addition to the four corner marks, as the registration marks at 19.7"/500mm intervals in the X direction (paper feeding direction) are printed. It offers reliably contour cut and long cutting jobs with superior accuracy.

Continuous contour cutting function



In the case of repeating the contour cutting of the same data, by entering the distance between jobs and the number of cut in the AAS II copy menu, the job can be accomplished by transmitting the data once. (X axis direction only)

All the functionality required by professional sign makers

- > Enhanced AASII (Automatic Alignment System II) contour cutting system with rego marks
 - Auto detection of artwork direction
 - Segmented alignment for long cutting jobs
 - Continuous step and repeat cutting
- > Best in class processing capability
 - Max cutting speed 1500mm/s
 - Max cutting force 600g
- > 3 types of interface connection: USB, Ethernet, RS-232C
- > Die cut and kiss cut functions for stickers
- > Easy to use control panel

Model Number	VC2-600	VC2-1300	VC2-1800
Operation Method	Roller type		
Max.Media Loading Width	30.3" (770mm)	62.7" (1594mm)	78" (1990mm)
Max.Cutting Width	24" (610mm)	52" (1320mm)	72" (1830mm)
Min.Media Loading Width	1.97" (50mm)		11.8" (300mm)
Max. Cutting length	164ft /50m*1		
Number of Pinch Rollers	3	4	6
Acceptable Material Thickness	0.8mm		
Driver Motor	DC Servo Control		
Cutting Force	5~600g		
Max. Cutting Speed	60.2" (1530mm)/sec (at 45°direction)		
Acceleration	4.2G		
Offset	0~1.0 mm (0.025mm/step)		
Memory Buffer	32MB/16MB (when using AAS II)		
Interface	USB 2.0 (Full Speed), Serial(RS-232C), Ethernet		
Type of Command	HP-GL, HP-GL/2 *2		
Mechanical Resolution	0.006mm		
Software Resolution	0.025mm		
Distance Accuracy	± 0.254 mm or ± 0.1% of move, whichever is greater*3		
Repeatability	±0.1mm*3		
Control panel	LCD (20 digits x 2 lines), 14Keys, 1Power LED		
Diameter of Blade	2.5mm		
Number of attachable Pen	1		
Available Tool	Cutter, Oil Ball Point Pen		
Operation	Temperature	59°F-86°F (15°C~30°C)	
	Humidity	25% ~ 75%	
Power Supply	AC 100~240V, 50/60Hz (auto switching)		
Power Consumption	Max. 110W		
Dimension (WxDxH) *4	36.6"x19.3" x 16.3" (950 x 486 x 412mm)	69.1" x 26.3" x 45.9" (1774 x 651 x 1111mm)	85.4" x 29.5" x 45.9" (2170 x 756 x 1127mm)
Net Weight	39.6 lbs/18kg	110.2 lbs/50 kg (including stand)	138.8 lbs/63kg (including stand)
Stand and Media Basket	Optional	Standard	

*1 This does not assure the accuracy.

*2 HP-GL,HP-GL/2 are trademarks of Hewlett-Packard Company.

*3 Effective only when operated with the cutting condition and the media certified by MUTOH.

*4 Exclude basket dimension

ValueJet® 1638UH



Dual Head LED-UV Printer for Rolls and Sheets

- > 64" (1625mm) LED-UV printer with dual heads and two UV curing lamps
- > Production speeds up to 21.7m²/h
- > Print to roll media and direct to rigid media up to 15mm thick
- > No outgassing - prints are ready for finishing as soon as they're printed
- > Scratch resistant - no need for messy primers on media like Corflute and acrylic
- > Two ink types: hard ink for rolls and sheets; soft ink for creasing and stretching
- > Choose either a double-CMYK configuration or CMYK plus white and varnish
- > Front and rear rigid media tables fold away when printing roll media
- > Impeccable print quality with Mutoh Intelligent Interweaving print technology (i²)
- > Optional SpectroVue VM-10 spectrophotometer attaches to the print carriage for recalibration and colour profiling
- > Mutoh LED-UV inks are VOC-free and are non-HAP

ValueJet 1638UH

The Mutoh ValueJet 1638UH is an LED-UV printer that prints direct to a wide range of 1625mm roll media and rigid boards up to 15mm thick. With dual, staggered print heads and two UV curing lamps, the VJ-1638UH boasts production speeds up to 22.7m²/h.

Printed jobs don't need to be outgassed. Your prints are ready for finishing and shipping as fast as you can print them.

Choose either hard or soft inks to suit your needs. LUH1 (hard) ink is suitable for rolls like vinyl and banner, as well as rigid sheets. US11 (soft / flexible) ink is great for media with creasing and stretching requirements. Mutoh UV inks offer high adhesion too. Prints are hardy and scratch resistant and there's no need for messy and expensive primers when printing sheet media like Corflute and acrylic.

The ValueJet 1638UH offers two colour configurations: double-CMYK or CMYK plus white and varnish. White ink can be printed under colour when using dark media or for making backlights. Use the varnish for an all-over clear gloss coat or for spot varnish effects.



Specifications

Technical Key Specifications

Print Technology	Drop-on-demand Micro Piezo Inkjet Technology
Print Head	Two heads in a dual staggered array
Nozzle Configuration	180 nozzles x 8 lines per head
Drop Mass Range (pl)	3.8 to 28
Head Heights (mm)	Automatic adjustment*

* Media thickness measured electronically; printer automatically adjusts head height

Roll Media Specifications

Media Width	Min: 182mm (7.17"), Max: 1625 mm (64")
Max. Print Width	1615 mm (63.58")
Max. Media Thickness	15 mm
Media Measurements	Roll: Ø 150 mm / 2" & 3" core / 30 kg

* Standard non-motorised roll-off system

Rigid Media Specifications

Media Width	Min: 182mm (7.17"), Max: 1625 mm (64")
Max. Print Width	1615 mm (63.58")
Max. Sheet Length	1200 mm per set of rigid media tables*
Max. Media Thickness	15 mm
Max. Media Weight	15 kg

* Use an additional set of rigid media tables for 2400mm long sheets and boards

Ink Specifications

Ink Drying System	Two Mutoh LED UV curing lamps
Ink Type	LED-UV Inks
Ink Volume	220 ml Cartridge
Ink Setup	2 x CMYK CMYK + 2 White + 2 Varnish

UV durability — without lamination: up to 3 years outdoor *

* Ink adhesion and durability will vary according to media type and brand. Individual testing is required according to your specific application. For heavy duty applications where mechanical stress is involved, lamination is recommended. Outdoor durability is dependent on ink coverage, display conditions, media type and brand, lighting angle and other factors. Testing under your intended conditions is recommended

Performance

Print Mode	4 Colour		6 Colour	
	CMYK	CMYK Only	White Only	Layer Print*
1440 x 1440 dpi	5.68	1.42	5.68	0.73
720 x 1440 dpi	11.35	5.47	11.35	2.75
720 x 1080 dpi	14.23	6.83	14.23	3.45
720 x 720 dpi	22.71	11.27	22.71	5.50

Print speeds quoted in m²/h

* Layer Print: CMYK + White + Varnish

Power Consumption

During Printing	< 770 W
In Stand-by	< 52 W
Power Supply	AC 200-240 - 50 Hz

Recommended Working Environment

Temperature	22°C - 32°C with Δt: max. 2°C/h
Humidity	40% - 60% (no condensation) with ΔRH: max. 5% RH/h

Machine Dimensions

Width x Depth x Height	2983 x 818 x 1261 mm (printer)
Width x Depth x Height	2983 x 2730 x 1261 mm (inc tables)
Weight	197 kg (+ tables 43 kg each)

ValueJet® 1638UR



Dual Head LED-UV Printer

- > UV LED dual head, dual lamp 162.5 cm (64") wide roll-to-roll printer
- > Print resolutions up to 1440 dpi
- > 4 - 6 colours - CMYK + White & Clear
- > High opacity white ink for prints on transparent, black and coloured substrates
- > Clear inks for (spot) varnishing and special effects / multi-layer printing
- > Simultaneous white, colour and clear printing
- > Prints come out dry and ready to finish or deliver
- > Low energy consumption
- > 0% VOC ink - no air purifier needed

ValueJet 1638UR

Expand your range of applications and produce real added value graphics with the ValueJet VJ-1638UR roll-to-roll wide format UV LED printer. It is a 162 cm (64") wide printer specifically developed for the commercial print and sign & display markets. The printer uses Mutoh's flexible UV LED CMYK, White and Clear 0% VOC inks which enable printing on the widest range of roll substrates.

The VJ-1638UR will create instant dry output, ready for application or post-treatment. It integrates two latest generation piezo drop-on-demand print heads delivering print resolutions up to 1440 x 1440dpi and two long-life UV LED lamps for fast curing. The printer requires no warm up time and is very energy efficient (< 770 Watt during printing) !

High added value can be created thanks to the use of white and clear inks enabling printing on transparent media and non-white substrates, multi-layer printing discover numerous new application possibilities !

Application Possibilities

Production of high quality graphics : in-store promotion prints & deco graphics, floor & window graphics, general signage, customised structured wallpapers, event banners & exhibition graphics, backlit prints, fine art prints, packaging samples, etc.



Specifications

Technical Key Specifications

Print Technology	Drop-on-demand Micro Piezo Inkjet Technology
Print Head	Two heads in a dual staggered array
Nozzle Configuration	180 nozzles x 8 lines per head
Drop Mass Range (pl)	3.8 to 28
Head Height/Media Thickness	1.5/0.3mm or 2.5/1.3mm
Ink Drying System	2 long life LED UV curing lamps

Roll Media Specifications

Media Width	Min: 182mm (7.17"), Max: 1625 mm (64")
Max. Print Width	1615 mm (63.58")
Media Measurements	Roll: Ø 150 mm / 2" & 3" core / 30 kg

* Standard non-motorised roll-off system

Ink Specifications

Ink Type	LED-UV Inks
Ink Colours / Volume	CMYK + Varnish: 220ml cassette / 800ml bag* White: 220ml cassette / 500ml bag*
Ink Setup	2 x CMYK CMYK + White + Varnish

* 800ml / 500ml pack requires optional adapter

Performance

Print Mode	4 Colour		6 Colour	
	CMYK	CMYK Only	White Only	Layer Print*
1440 x 1440 dpi	5.68	1.42	5.68	0.73
720 x 1440 dpi	11.35	5.47	11.35	2.75
720 x 1080 dpi	14.23	6.83	14.23	3.45
720 x 720 dpi	22.71	11.27	22.71	5.50

Print speeds quoted in m²/h * Layer Print: CMYK + White + Varnish

Power Consumption

During Printing	< 770 W
In Stand-by / Sleep	< 55 W < 25 W
Power Supply	AC 100-120 V / AC 200-240 - 60/50 Hz ≤ 4.0A / ≤ 2.0A

Recommended Working Environment

Temperature	20°C - 32°C with Δt: max. 2°C/h
Humidity	40% - 60% (no condensation) with ΔRH: max. 5% RH/h

Machine Dimensions

Width x Depth x Height	2983 x 818 x 1261 mm
Weight	189 kg (printer + stand)

ValueJet® 626UF



A2+ Tabletop LED-UV Flatbed Printer

- > Print direct to three-dimensional and flat objects up to 150mm high
- > 483 x 594 mm electronically controlled vacuum suction table
- > Print on aluminium, acrylic, wood, cardboard, pens, phones, baseballs, and more
- > Optional rotary adapter for printing on bottles and cylindrical objects
- > Automatically detects media and electronically adjusts table height
- > Hard ink for rigid and flexible objects or soft ink for creasing and stretching
- > CMYK plus optional white ink for colour on dark objects; varnish for spot gloss
- > Does not need an air purification system: inks are VOC free and contain no HAPs
- > Virtually no set-up costs per print compared to Screen and Pad Printing
- > Impeccable print quality with Mutoh Intelligent Interweaving print technology (i²)

ValueJet 626UF

The Mutoh ValueJet 626UF is an LED-UV desktop flatbed printer that prints direct to a wide range of three-dimensional and flat objects up to 150mm high. The 483 x 594mm electronically controlled vacuum suction table has the largest print area in its class, allowing you to print more things at once. More phone cases, more signs, more pens, more everything, in one go.

The very versatile VJ-626UF can print your designs direct to promotional goods and giftware; as well as directional signs and backlit panels. There's virtually no setup costs so it's perfect for short-run jobs providing a viable alternative to Screen and Pad Printing. The VJ-626UF includes time-saving features like measuring the height of objects and automatically adjusting the table for dot-accurate printing.

The VJ-626UF is a popular choice for printing logos and personalised designs on sporting goods, including golf balls and baseballs; as well as plaques, wood, aluminium, cardboard, pens and more. Add the optional rotary adapter to print to bottles and flasks too.

Our inks are VOC-free and contain no harmful HAPs so there's no need for an air purification system. Choose LUH1 (hard) ink for rigid objects and those that are reasonably flexible. Or choose US11 (soft / flexible) ink which is designed for creasing and limited stretching. Mutoh UV inks offer high adhesion too. Prints are hardy and scratch resistant.

Two colour configurations are available for the ValueJet 626UF: double-CMYK or CMYK plus white and varnish. White ink can be layered under colour when printing dark objects; or for backlit colour on acrylic sheets and trophies. Varnish is great for an all-over clear gloss coat, or for highlighting with a spot varnish, or for textured ink effects. banners & exhibition graphics, backlit prints, fine art prints, packaging samples, etc.



Specifications

Technical Key Specifications

Print Technology	Drop-on-demand Micro Piezo Inkjet Technology
Print Head	1
Nozzle Configuration	180 nozzles x 8 lines
Drop Mass Range (pl)	3.9 to 26.9

Media Handling

Max. Media Size	483mm x 594mm
Max. Print Size	473mm x 584mm
Max. Media Thickness	150 mm
Max. Media Weight	6 kg
Table Height Adjustment	Motorised table height with obstacle detection
Table Suction	Integrated vacuum table, electronically adjustable

Ink Specifications

Ink Drying System	Mutoh low heat LED-UV curing lamp
Ink Type	Mutoh LED-UV Ink: LUH1 (hard) or US11 (soft)
Ink Volume	220 ml Cartridge
Ink Setup	CMYK (CCMMYK) CMYK + White + Varnish
UV durability — without lamination:	up to 3 years outdoor *

* Ink adhesion and durability will vary according to media type and brand; and mechanical stress. Individual testing is required according to your specific application. Outdoor durability is dependent on ink coverage, display conditions, media type and brand, lighting angle and other factors. Testing under your intended conditions is recommended.

Performance: speed in tables per hour*

Print Mode	4 Colour		6 Colour	
	CMYK	CMYK Only	White Only	Layer Print**
1440 x 1440 Uni	3.4	1.4	3.4	0.5
720 x 1440 Uni	6.8	3.22	6.8	1.2
720 x 1080 Bi	8.9	4.5	8.9	1.77

* Excludes load and unload time

** Layer Print: CMYK + White + Varnish

Power Consumption

During Printing	< 300 W
In Stand-by	< 3.2 W
Power Supply	AC 200-240 - 50 Hz

Connectivity / Interface

Ethernet	10 BASE-T; 100 BASE TX
----------	------------------------

Recommended Working Environment

Temperature	22°C - 32°C with Δt: max. 2°C/h
Humidity	40% - 60% (no condensation) with ΔRH: max. 5% RH/h

Machine Dimensions

Width x Depth x Height	1190 x 1535 x 605 mm (printer)
Width x Depth x Height	1190 x 1535 x 1255 mm (on stand)
Weight Printer:	120 kg Stand: 21 kg

ValueJet® 1638WX 1624WX



Dye Sublimation Perfection

- > Sublimation printing on 1625mm / 64" transfer paper
- > Handles popular transfer paper from 66 to 150 gsm
- > Staggered dual print heads with latest generation 1440 dpi Piezo heads
- > VJ-1638WX dual head production print speeds 42 m²/h
- > VJ-1624WX single head production speeds between 14 and 27.5 m²/hr
- > Utilises Mutoh i² Intelligent Interweaving and new DropMaster technology
- > Suitable for water-based dye sublimation inks
- > Ideal for production of soft signage, sportswear, promotional goods, photo panels and more
- > Environmentally friendly printing

ValueJet® 1638WX

1625mm (64") Dual-Head, Double CMYK or 8 Colour Sublimation Printer
Destined for high quality volume applications, the ValueJet 1638WX wide format printer offers production speeds up to 42 m²/h at 360 x 720 dpi and 65 m²/h at 360 x360 dpi. The machine supports all typical dye sublimation transfer paper weights (from 66 g/m² to 150 g/m²).



ValueJet® 1624WX

1625mm (64") 4 Colour Sublimation Printer
The compact Mutoh ValueJet 1624WX printer is ideal for every day sublimation printing. The printer is fit for both startup and established businesses wanting to extend their product portfolio.



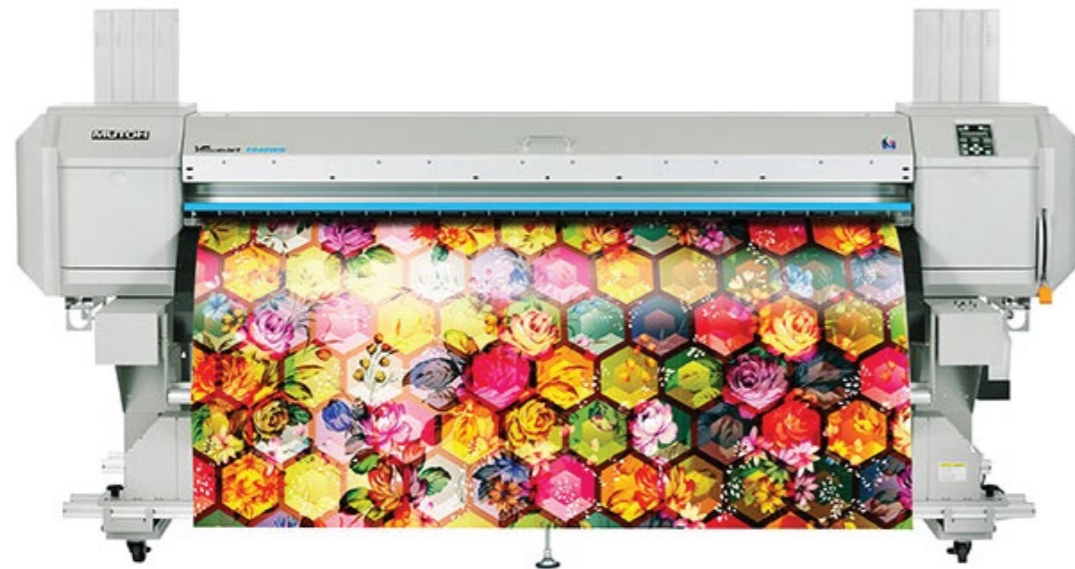
Typical dye sublimation applications are:

- > Yardage: sportswear, polyester T-shirts, school sportswear, swim wear and other apparel
- > Soft signage and graphics for events, trade shows and sporting grounds
- > Home decoration: curtains, bed linen, soft furnishings
- > Flags & pennants
- > Sports goods: snowboards, helmets etc
- > Promotional Goods: mugs, umbrellas, mouse mats, photo panels
- > Apparel: blouses, sportswear, outdoor jackets, T-shirts, school sportswear, swimwear

Specifications

Print method	On-demand piezo drive system
Head Height	Three-level adjustment of Low 1.5mm, Mid. 2.5mm, and High 4.0mm
Number of heads	2 staggered (VJ-1638WX) 1 (VJ-1624WX)
Ink	Aqueous / Dye-Sublimation
Minimum drop size	3.5pl
Variable dot	Yes
Max. media width	1625mm
Max. media thickness	0.3, 1.3, 2.5mm (according to head height)
Max. media diameter	150 mm or less
Core diameter	50mm or 75mm
Media weight	30 Kg
Max. print width	1615mm
Max. print length	1500 m
Max. roll weight	30kg (up to 80kg with optional heavy duty take-up kit)
Media roll diameter/core	150mm on a 3" core (75mm) or 2" (50mm) core
Power requirements	AC 200V~240V at 50Hz
Power use	Printing <210W Stand-by 38W
Operation Temperature	22°C~30°C Humidity: 40%~60% No condensation
External dimensions	(W) x (D) x (H) body: 2698mm x 885mm x 1261mm
Weight Main body:	281kg (VJ-1638WX) 126 kg (VJ-1624WX) Stand 33 kg

ValueJet® 1948WX



Dye Sublimation at 125 m²/hr

- > Four variable dot print heads in a 2x2 staggered array for high quality, high speed
- > Genuine Mutoh ink: double-CMYK or CMYK, Lc, Lm, Lk, LLk
- > Phenomenal production speeds up to 125 m²/h
- > Create sports apparel, soft signage, blacklit-fabric panels, Chromaluxe® photo murals
- > Handles all popular weights of sublimation transfer paper, up to 1910mm wide
- > Adjustable pressure rollers can be individually lifted to reduce wrinkling
- > Large 400mm deep heater dryer for high speed printing
- > Optional motorised feed and take-up system for transfer paper rolls up to 100kg
- > Open RIP software architecture, supported by all major RIP brands
- > Impeccable print quality with Mutoh Intelligent Interweaving print technology (i²)

ValueJet 1948WX

The Mutoh ValueJet 1948WX printer has four print heads in a two-by-two, staggered array for high-volume production printing on sublimation transfer paper.

Handling widths of up to 1910 mm (75"), the VJ-1948WX prints to all popular transfer paper weights. Rolls up to 100Kg can be used with the optional heavy-duty motorised feed/take-up. The printer features a large 400mm deep heater dryer and is capable of production speeds between 88 m²/h and 125 m²/h in 3 pass and 2 pass modes, respectively. To minimise paper wrinkling, the pressure rollers can be individually lifted as required. Mutoh DH11 ink has been specially formulated for the VJ-1948WX and customers can choose between a double-CMYK setup for sheer speed; or CMYK and four light inks for incredibly smooth tones.

With production speeds around 60% faster than competing machines, the ValueJet 1948WX is the first and last choice in high-volume production sublimation printing.



Specifications

Technical Key Specifications

Print Technology	Drop-on-demand Micro Piezo Inkjet Technology
Print Head	Four heads in staggered two-by-two arrangement
Nozzle Configuration	180 nozzles x 8 lines per head
Head Heights	Low: 1.5 / Middle: 2.5 / High: 4.0
Ink Drying System	2 long life LED UV curing lamps

Media Specifications

Max. Media Width	1910 mm (75.19")
Max. Print Width	1900 mm (74.8")
Max. Media Thickness	0.3 / 1.3 / 2.8 mm *

* Max. media thickness dependant on head height

Media Measurements	* Ø 250 mm / 2" & 3" / 100 Kg
--------------------	-------------------------------

* Max. diameter / core diameter compatibility / max. weight

Ink Specifications

Ink Type	Mutoh water-based dye sublimation ink
Ink Volume	2000 ml bag*

* Mutoh 2000 ml bag uses high capacity ink adapter (part no. VJ1948 INK CASE) - (8 pcs) req'd

Ink Colours	CMYK x 2 / CMYK, Lc, Lm, Lk, LLk
-------------	----------------------------------

Performance

Speed Production	360 x 720 dpi 2 Pass	125 m ² /h
Production	360 x 1080 dpi 3 Pass	88 m ² /h
Quality Production	720 x 720 dpi 4 Pass	67 m ² /h
High Quality	360 x 1080 dpi 6 Pass	47 m ² /h
Fine	720 x 1080 dpi 12 Pass	23 m ² /h

Power Consumption

Printing with heaters off	≤ 600 W
Printing with heaters on	≤ 2840W
Power Supply	200-240V AC / 50Hz

Recommended Working Environment

Temperature	22°C - 30°C with Δt: max. 2°C/h
Humidity	40% - 60% (no condensation) with ΔRH: max. 5% RH/h

Machine Dimensions

Width x Depth x Height	2983 x 996 x 1261 mm
Weight	201 kg

ValueJet® 1938TX



ValueJet 1938TX

The Mutoh ValueJet 1938TX printer (1910 mm – 75”) has a dual, staggered head design for high-speed, high quality direct-to-fabric production. Using a revolutionary, sensor-driven motorised fabric tensioning system, the

VJ-1938TX produces perfectly prepared fabric, ready for finishing on a calender or heat-fixation unit - without the need for messy washing or steaming. The VJ-1938TX has extra-large media guides for fabric with unfinished edges and the 6mm head height allows for printing onto long-fibre material. Print to woven and limited stretch fabrics and non-stretch open-weave on rolls up to 100 Kg that include cottons, polyester, silk, rayon and mixed fibre products. It is suitable for the production of clothing, fashion, sportswear, swimwear, home furnishings and soft signage.

The VJ-1938TX uses Mutoh’s eight colour pigment inks available in 1 litre bags. Choose from either a fast double-CMYK configuration or the extended gamut setup that includes orange, green and blue inks for rich, saturated colour.



1910mm direct to textile printer with dual heads

- > Staggered dual-head setup with latest generation 1440 nozzle Piezo heads
- > Revolutionary fabric transport system handles woven and limited stretch fabric
- > Print using Mutoh’s dual-CMYK or 8 colour inkset, including Orange, Green, Blue
- > Production speeds up to 40 m²/h
- > Create fabrics for garments, fashion, home furnishings, swimwear, soft signage, flags
- > Use heat fixation / calender to finish - no messy steaming or washing
- > Head height can be set up to 6mm to allow printing long-fibre fabrics
- > Heavy duty feed and take-up system for fabric rolls up to 100kg
- > Tensioning system at the platen ensures even, flat tensioning across full print width
- > Integrated platen gutter system allows for printing open weave fabrics
- > Impeccable print quality with Mutoh Intelligent Interweaving print technology (i²)

Specifications

Technical Key Specifications

Print Technology	Drop-on-demand Micro Piezo Inkjet Technology
Print Head	Two heads in staggered arrangement
Nozzle Configuration	180 nozzles x 8 lines per head
Head Heights (mm)	Low : 2.5 / Middle: 3.5 / High : 6.0

Media Specifications

Max. Media Width	1910 mm (75.19")
Max. Print Width	1900 mm (74.8")
Max. Media Thickness	0.3 / 1.3 / 2.8 mm *

* Max. media thickness dependant on head height

Media Measurements * Ø 250 mm / 2" & 3" / 100 Kg

* Max. diameter / core diameter compatibility / max. weight

Ink Specifications

Fabric Unwinding (feed)	Supports face-in & face-out fabric rolls
Fabric Winding (take-up)	Face-in (tension) & face-out (tension or slack)
Fabric Compatibility *	Cotton, silk, rayon, mixed fibre, polyester

* Some fabrics give better results when (factory) pre-treated or coated. Please refer to your fabric supplier. Due to the volume of fabrics available, testing under your conditions is recommended.

Ink Specifications

Ink Type	Mutoh water-based pigment ink
Ink Volume	1000 ml bag*

* 1000 ml bag use high capacity ink adapter (part no. VJ-HCIPADPT) - 2 sets (8 pcs) req'd

Ink Colours	CMYK x 2 / CMYK, Or, Gr, Bl, K
-------------	--------------------------------

Performance

Quality Production	(720 x 1080)	8.5 m ² /h
Production	(720 x 720)	11.0 m ² /h
Speed Production	(360 x 720)	22.0 m ² /h
Speed	(360 x 360)	41.0 m ² /h

Power Consumption

During Printing	≤ 360W
Off / Stand-by	≤ 0.5 W / ≤ 60 W
Warming Up	≤ 1100 W (main) & ≤ 1250W (heat)
Power Supply	200-240VAC/50 Hz, single phase

Recommended Working Environment

Temperature	22°C - 30°C with Δt: max. 2°C/h
Humidity	40% - 60% (no condensation) with ΔRH: max. 5% RH/h

Machine Dimensions

Width x Depth x Height	2983 x 1134 x 1261 mm
Weight	349 kg